

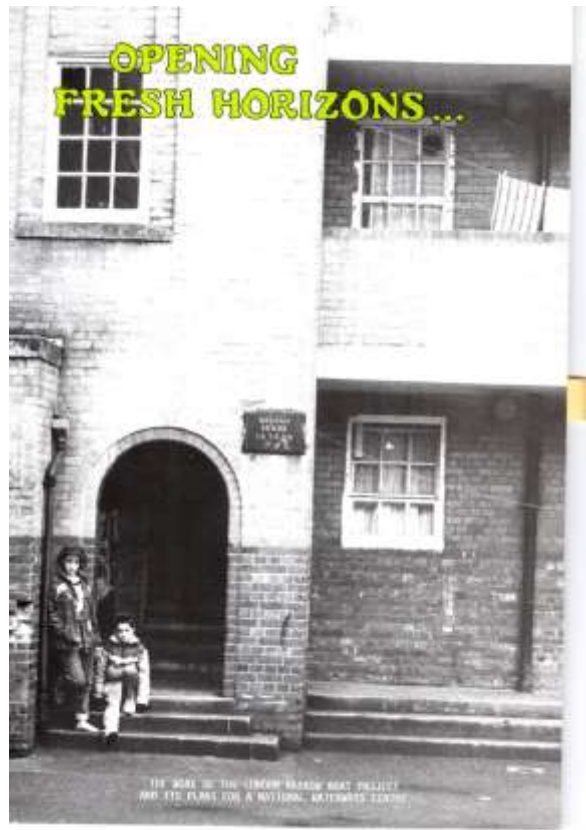


WHAT MIGHT HAVE BEEN

Dave Otway provides a brief insight into a project which could have made LNBP even bigger than what it is today.

“IN 1987 A PROPOSAL WAS PUT FORWARD TO INVESTIGATE THE FEASIBILITY OF THE CHARITY CREATING A WATERWAYS CENTRE WHICH WOULD IN EFFECT BE A SMALL MARINA BASE FOR OUR BOATS AND PROVIDING FULL FACILITIES INCLUDING CLUB HOUSE AND ACCOMODATION FOR PERSONNEL LOOKING AFTER THE BOATS AND SITE.

“THERE WERE TO BE VARIOUS WATERBASED FACILITIES AVAILABLE AS WELL AS SOME EDUCATIONAL ACTIVITIES, THE BULK OF OUR USERS AT THAT TIME COMING FROM SCHOOLS. VARIOUS SITES AND FUNDING WERE INVESTIGATED AND A BOOKLET “OPENING FRESH HORIZONS” WAS PRODUCED TO CIRCULATE FOR SUPPORT AND FUNDING.





LONDON NARROW BOAT PROJECT

bringing city children to countryside canals,
providing young people with holidays and leisure
activities, learning opportunities and training:
opening fresh horizons...



Contents

| | |
|---------------------------------------|----|
| THE STORY SO FAR | 3 |
| DONORS AND DATA | 10 |
| PLANS FOR A NATIONAL WATERWAYS CENTRE | 26 |
| CONTACT ADDRESS | 30 |



The London Narrow Boat Project
bringing city children to countryside
canals, providing young people with
holidays and leisure activities,
learning opportunities and training;
opening fresh horizons . . .



LONDON NARROW BOAT PROJECT

The London Narrow Boat Project was founded in 1981 by a group of teachers, youth workers and canal enthusiasts. It is a non-profit-making voluntary organisation that exists to provide subsidised holidays and educational courses on the inland waterways for children and young people from deprived urban areas.

And what better way to take youngsters away from city life for a while?

Introduce them to the world of canals: the excitement of life afloat, steering a boat through the open countryside, working the locks and experiencing the tunnels; discovering a world rich in resources and learning to live together in fresh surroundings and an atmosphere of peace and quiet.

The Project's boats are purpose-built, modern and luxurious vessels, comprehensively equipped. Each is full length, with three separate cabins accommodating a total of twelve berths. The boats are made available, either with an accompanying Skipper or for self-steering, to any youth group or youth organisation working in an urban environment.

Every year, the Project caters for over a thousand children and young people from youth clubs and play-schemes, from schools and colleges, from hostels, churches and uniformed organisations, and from groups working with the handicapped and the unemployed. Individual children in need are also catered for.

This is our invitation to you to book one or both of our boats for your group. Whether you are planning a holiday, a social trip or a full educational course, and whether you want to enjoy just a weekend or a full week afloat - YOU'LL BE WELCOME ON BOARD!



▲ Happy days on the Grand Union Canal



London Marina Boat Project
3 Havelock Close, Faversham, London SE13 3NF
Charity Registration No. 384372

“ONE SITE INVESTIGATED WAS AN INFILL SITE AT ODMOR, NORTHANTS. IN 1989 ANOTHER POTENTIAL SITE WAS FOUND AT YARDLEY GOBION, NORTHANTS AND WHICH WAS A DESERTED FARM WITH ACREAGE DIRECTLY ADJOINING THE GRAND UNION CANAL.

“A MAJOR GRANT GIVING TRUST WAS FOUND WHO WERE PREPARED TO BACK THE SCHEME AND WE HAD FULL BACKING FROM BRITISH WATERWAYS FOR THE MARINA DEVELOPMENT BY THE CANAL.

“HOWEVER DESPITE NEGOTIATIONS REACHING AN ADVANCED STAGE WITH THE VENDORS THE PROMISED FINANCIAL BACKING FELL THROUGH AND THE DEVELOPMENT OF THE PROPOSAL BECAME A BRIDGE TOO FAR FOR THE COMMITTEE AT THAT TIME.

A GRAND IDEA THAT DIDN'T QUITE WORK OUT.